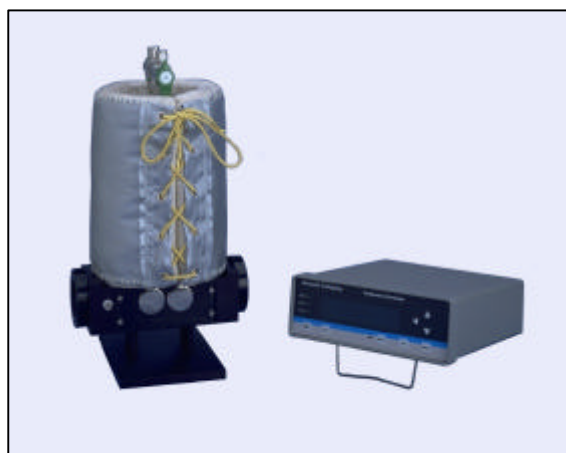
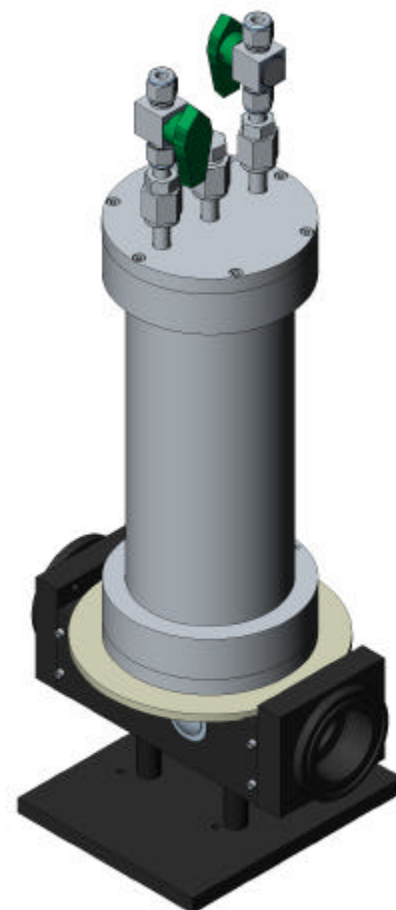


Mars Series Multi-Pass Gas Cells



Configuration Data Sheet – Mars 0.5L/4.8M-SS

MARS-0.5L/4.8M	MARS Series Long Path Gas Absorption Cell for FTIR gas analysis. Mounting fixture and transfer optics for center-focus FTIR. Optics mounted on easily removable sub-assemblies. SS valves and fittings with 1/4" Swagelok connections and flow tube. Comes with two 25mm x 4mm KBr windows as standard. Pathlength: 4.8 meters, fixed Volume: 0.5 liters approx. Cell Body: aluminum electroless nickel Cell Hardware: aluminum electroless nickel Optical Coating: GemGold protected HI-IR Temperature Range: ambient-200 C. Pressure Range: vacuum-45 p.s.i.	\$9,600.00
MARS-0.5L/4.8M-SS	MARS Series Long Path Gas Absorption Cell for FTIR gas analysis. Mounting fixture and transfer optics for center-focus FTIR. Optics mounted on easily removable sub-assemblies. SS valves and fittings with 1/4" VCR connections and flow tube. Comes with two 25mm x 4mm KBr windows as standard. Pathlength: 4.8 meters, fixed Volume: 0.5 liters approx. Cell Body: electropolished 316 SS Cell Hardware: electropolished 316 SS Optical Coating: GemGold protected HI-IR Temperature Range: ambient-200 C. Pressure Range: vacuum-45 p.s.i.	\$12,800.00
CNT-110	Digital controller, user programmable. 110 V with "J" type thermocouple.	\$1,080.00
MRSJH-0.75L-110	Heater for MARS Series 0.75L/6.4 meter gas cells, 110v	\$980.00



Mars Series Multi-Pass Cells from Gemini offer high performance, reliability, simplicity, and dependability; meeting the most demanding of gas sampling needs for industrial or field deployed FTIR and IR instrumentation. Cell construction is modular in principle, with interchangeable elements to promote versatility and serviceability - metal cell bodies and cell hardware can be constructed of virtually any material - stainless steel (passivated or electropolished), pure nickel, nickel coated aluminum, black anodized aluminum, and FEP Teflon coated aluminum are all readily provided to user specification. Systems can be configured for high pressure or high vacuum application. User-programmable temperature control and pressure monitoring options are available.

Gemini Mars Series Gas Cells

